

Key Messages

Dear Parents and Carers,

This half term has been quite different from the last as we have stepped into another period of school being closed except for vulnerable and key worker children. But as I reflect back on the past few weeks, I am amazed at the magnificent adjustment the children and all the parents / carers have made to our different way of teaching. The engagement has been exceptional with a huge percentage of children accessing, completing and interacting with their online learning and sharing thoughts, learning and games with each other, without being in the same space. This fills me with pride, to see how they have adapted and taken on this new challenge with vigour and enthusiasm showing the adults around them how resilient they can be. Well done to them all!

On our website, we have included more information about our remote learning offer. We feel this has been the right approach for our children. Thank you to those that have shared their thoughts with us as we have reflected and implemented some changes over the past few weeks. As I'm sure you will understand, one size will never fit all but we are trying to find the best solution for the majority and trying to offer as much support as we can.

Recently it has been announced that schools will not fully open until at least 8th March. February half term is also a holiday for all and school will not be open for any children.

I wanted to take the opportunity to remind everyone that your best is good enough. You are all working incredibly hard and this lockdown has been more challenging than before, so please be kind to yourselves. If you are safe, healthy, loved and cared for then appreciate those things in life. We do not expect you as parents to all be teachers suddenly and whatever you can do to support your child will help them. Make sure all the family takes some time to step away and do something that you all enjoy and makes you feel more relaxed.

As always, any support you need please get in touch, we are here to offer practical advice or just a listening ear!

Stay safe and healthy everyone.

Weduc

At Green Lane we are using Weduc as a way of communicating with parents. We will no longer be sending paper copies of home learning. Notifications about your child's online learning will be messaged to you via Weduc. Teachers will also give you updates about your child's class through Weduc. If you do not have access to Weduc please speak to a member of the office team on 01274 774644.



Spelling Shed



Bug Club
School Code: 377a



Timestable Rock
Stars



PurpleMash

Home Learning

Where possible, the children should be accessing learning every day as if they are in school. All teachers are providing learning activities through Microsoft Sway. For most children these activities are posted to their Purple Mash account. If there are any problems accessing the online learning then please be in touch: 01274 774644 or on homelearning@greenlane.ngfl.ac.uk

Mr Moore, our Computing specialist teacher, has set up some parent videos to help parents to understand how to use the technology. These can be found on the Green Lane Youtube channel.

<https://www.youtube.com/channel/UCfFsJLq3OWRSp8uCTFAC4BQ>



Upcoming Events

February

Monday 22nd February	Children to commence online learning. School open for critical worker children and vulnerable children.
-----------------------------	--

March

Thursday 4th March	World Book Day
Monday 8th March	International Women's Day
Friday 12th March	Science Day
Monday 22nd March	Spring celebration.
Friday 26th March	Wear a hat day for Brain Tumour Research
Friday 26th March	School closes for the Easter holiday

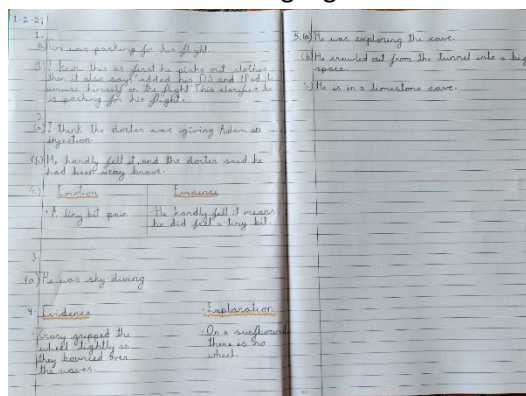
April

Monday 12th April	Return to school for the start of Spring 2 term.
-------------------------------------	--

Green Lane Learning Highlights

There has been some fantastic learning happening at home. It makes us really happy when we get photos of work sent in. A special thank you to all the supportive parents for helping this to happen.

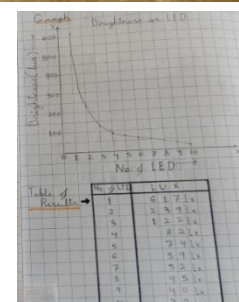
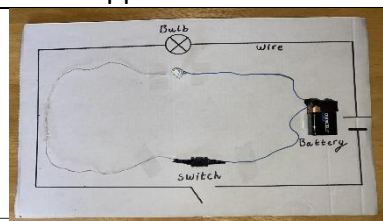
Here are a few of the highlights our classes this half term:



This is some of the things that have been sent to us from our terrific children in Year 6.

The windows were broken and some even boarded up as if there was something inside which humanity should never see. Trees towered above and overgrown shrubs kept the entrance hidden. The house's stone wall killed the once bushy green leaves as soon as they made contact. What tragic events could have unfolded? Will we ever figure out the mystery behind this house? Could the rumors be true? To be continued...

Saanvi Sahu 6AH





INTRODUCTION:

Climate change is when parts of the earth and animals habitats are disrupted due to the weather. This means that climate change is having effects of how animals are living, and it is also destroying parts of our earth.

How is Climate Change causing us problems?

Climate change is affecting our earth in many ways. Since the high increase of temperatures (°C), many glaciers have begun to sink, which means that the oceans have begun to rise. Not only have the oceans begun to rise, but floods have been caused which destroy people's homes and animals habitats, these are only a couple of examples of climate change.

CLIMATE CHANGE

TAYYAB MUSTAFA



In the picture above, is an image of what the Arctic currently looks like. The Arctic is now split into pieces as climate change has caused the ice in the Arctic to melt due to the warmth.

Facts about Climate Change:

1. More than 1 million animal species are at risk due to Climate Change.
2. Climate Change has a huge impact on human health!
3. A warmer planet will mean more rain, change in seasons and rise in sea levels.

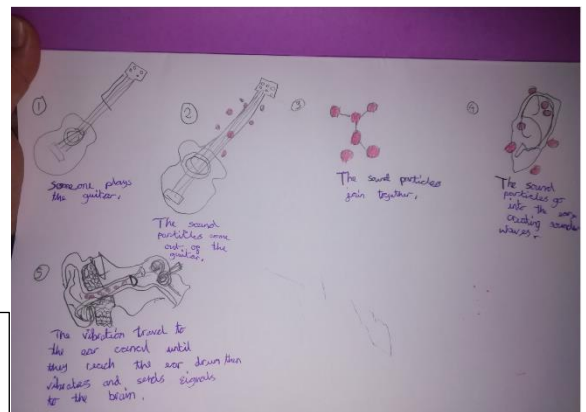
Conclusion:

To conclude, there are many causes of climate change, and they are also many examples of it. Since Climate Change is causing our world an unusual issue, we must try to play our part to get rid of this 2nd pandemic. We must play our part, get rid of Climate Change & save lives!

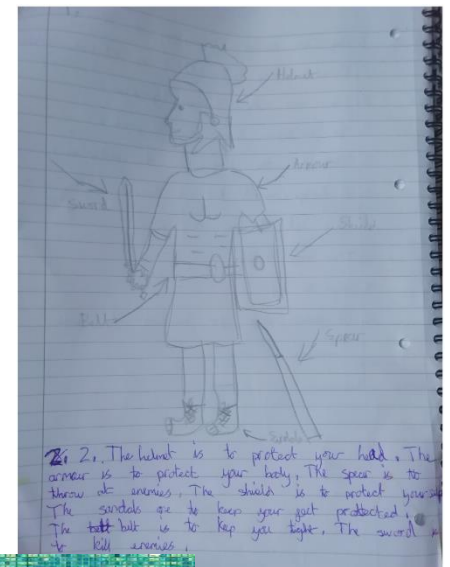
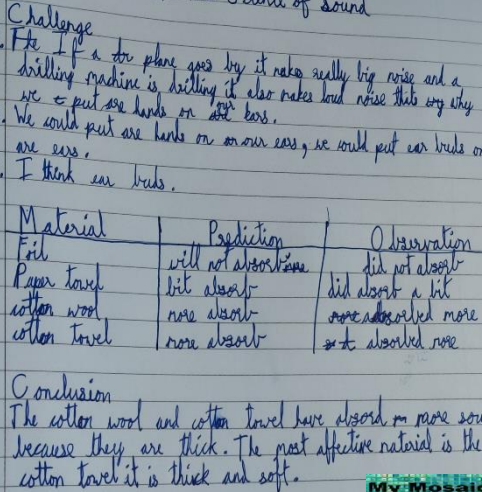
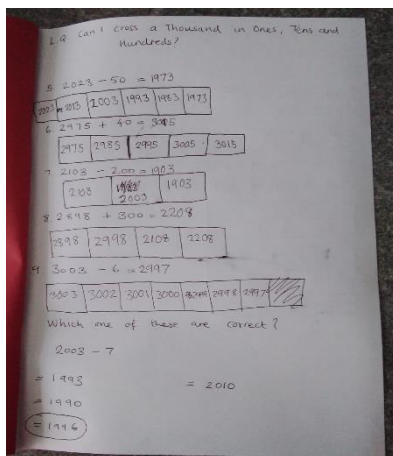
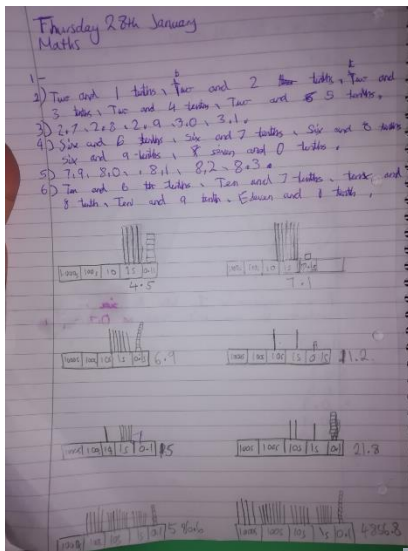
The Adventures of Beetle Boy

By day, Beetle boy is a normal boy (Tom) who attends a normal primary school. But by night, he becomes the toughest superhero the world has ever seen (he is simply batman) and spends his time fighting villains. His shell is so strong (like an unbreakable, firm wood) that he is able to withstand anything hitting him (e.g., Bow and Arrows, spears etc) without even the slightest of bruises! If his friends ever realised the amazing powers he has - like controlling people with his own pair of eyes, he would be asked to show them off every day at school. He knows that, as a superhero, he has sworn to keep his superpowers a secret (this is what makes him feel very proud and unique) and use them only to protect the world from evil.

Tayyab Mustafa 6AH



Children working really hard in Yr 3 and 4 at home. We are so impressed with the amazing work.



Sparkling Gems of Italy

Naples itself is a twinkling gem that attracts your eyes. Cool sightseeing spots are the sapphire, stunning and twinkling Ischia, and the glittering, sparkly, and moonstone Vesuvius. Make time for a peek of the tasty orange grove which is truly Ambery beautiful and precious.



Take a Cycle Out

Naples is famous for its cliffs and beaches. So why not admire the spectacular view on your bike and be adventurous. Walk in the footsteps of the ancient temples of Athena to discover Roman traditions. Trek up to the cliffs and relax your aching feet with astonishing star gazing, music, and fireworks.

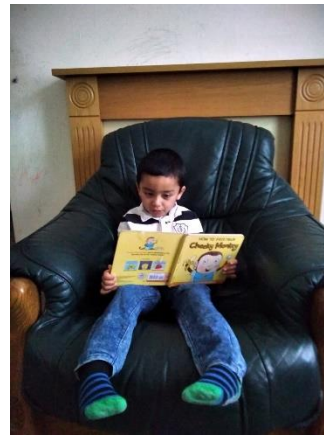


Terrific snow sculptures have been made and plenty have developed other skills at home like baking skills.



Lovely craft projects happening with many of the children – we especially enjoyed receiving the pictures of children reflecting on Children's Mental Health Week.





We are super proud of our youngest learners who are still exploring, playing and thinking at home too!

